

BRASS FOOT CHECK VALVE

Brass foot valve for water distribution.

Brass CW617N body, strainer and disc for a better strength mechanical.

NBR gasket for an excellent tightness and fiber gasket between body and strainer.

Only for vertical position with ascendant fluid.



Size : DN 1/2" to 4"

Connection : Female BSP

Min Temperature : +0°C

Max Temperature : +90°C

Max Pressure : 10 Bars up to DN1"

Specifications : Vertical Position

Brass strainer

Brass disc with NBR gasket

Materials : Brass CW617N according to EN 12165

BRASS FOOT CHECK VALVE

SPECIFICATIONS :

- Respect the flow direction indicated by the arrow
- Vertical position with ascendant fluid
- Threaded cylindrical female BSP ends
- Brass disc with NBR gasket
- Brass body and strainer CW617N for a better strength mechanical

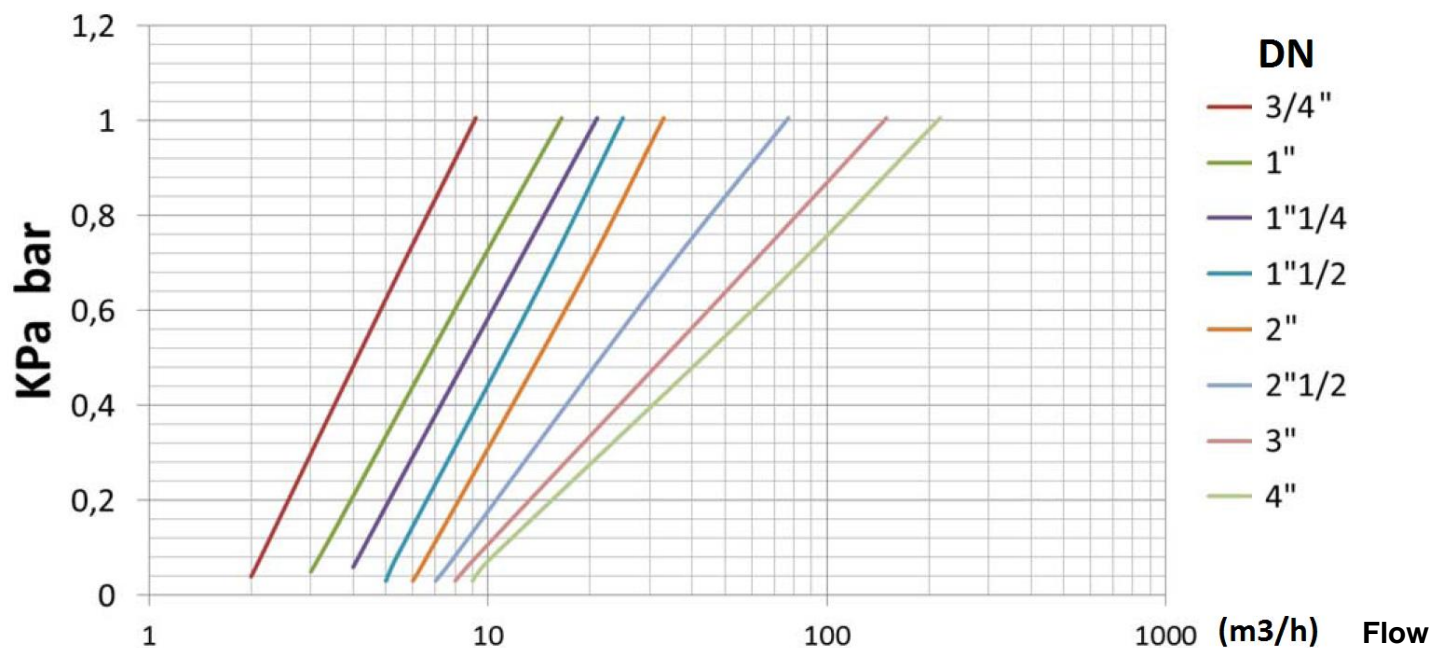
USE :

- Water distribution
- Min Temperature Ts : + 0°C
- Max Temperature Ts : + 90°C
- Max Pressure Ps : 10 bars up to DN 1" , 8 bars from 1"1/4 to 2" and 6 bars over

RANGE :

- Threaded cylindrical BSP ends from DN 1/2" to DN 4"

HEAD LOSS GRAPH :



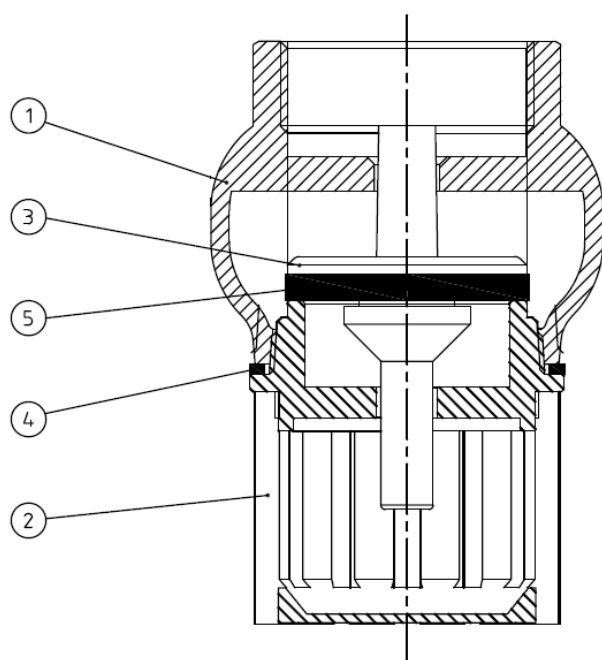
FLOW COEFFICIENT Kvs (M3 / h) :

| DN | 3/4" | 1" | 1"1/4 | 1"1/2 | 2" | 2"1/2 | 3" | 4" |
|--------------|------|------|-------|-------|----|-------|-----|-----|
| Kvs (m3/h) | 9.2 | 16.5 | 21 | 25 | 33 | 77 | 150 | 216 |

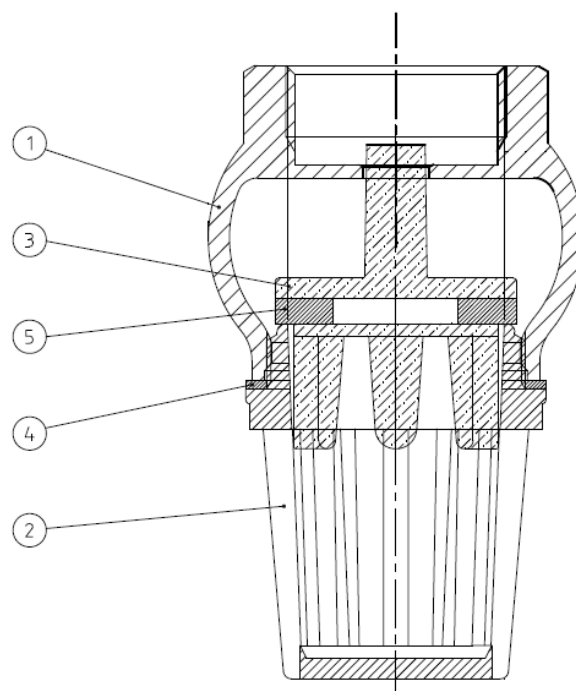
BRASS FOOT CHECK VALVE

MATERIALS :

DN 1/2" and DN 2" 1/2 to 4"



DN 3/4" to 2"

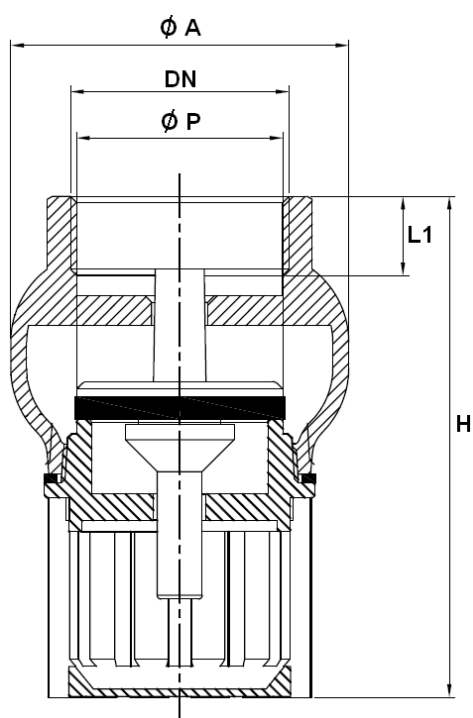


| Item | Designation | Materials |
|------|-------------|--------------------------------------|
| 1 | Body | Brass CW 617 N according to EN 12165 |
| 2 | Strainer | Brass CW 617 N according to EN 12165 |
| 3 | Disc | Brass CW 617 N according to EN 12165 |
| 4 | Gasket | Fibers |
| 5 | Gasket | NBR |

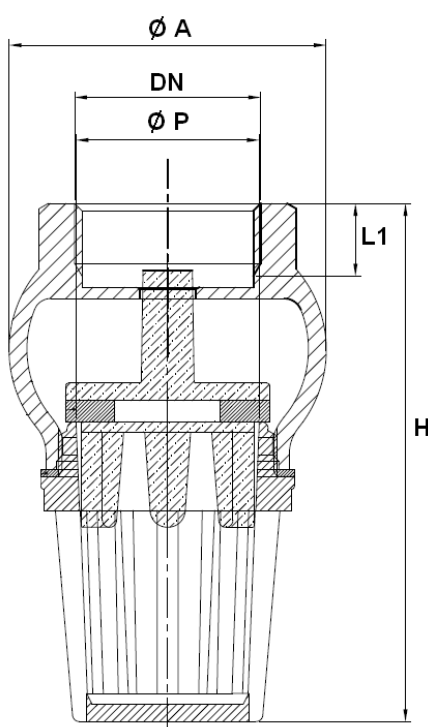
BRASS FOOT CHECK VALVE

SIZE (in mm) :

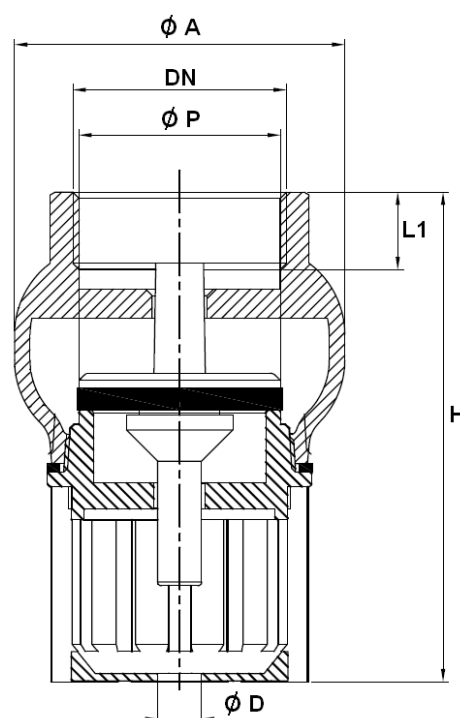
DN 1/2"



DN 3/4" to 2"



DN 2 1/2 to 4"



| DN | 1/2" | 3/4" | 1" | 1 1/4" | 1 1/2" | 2" | 2 1/2" | 3" | 4" |
|---------------|-------|-------|-------|--------|--------|-------|--------|-------|-------|
| Ø A | 39 | 45 | 51 | 61 | 68 | 80 | 103 | 115 | 145 |
| Ø D | - | - | - | - | - | - | 11 | 11 | 12 |
| Ø P | 18 | 23 | 28 | 34 | 41 | 51 | 62 | 73 | 93 |
| L1 | 10 | 10 | 12 | 13 | 13 | 15 | 12 | 15 | 22 |
| H | 60 | 73 | 81 | 95 | 103 | 121 | 136 | 151 | 187 |
| Mesh | 2 | 3 | 3 | 3 | 3 | 4 | 5 | 5 | 5 |
| Weight (Kg) | 0.159 | 0.254 | 0.324 | 0.504 | 0.590 | 1.025 | 1.353 | 1.724 | 3.256 |

BRASS FOOT CHECK VALVE**STANDARDS :**

- Manufacturer certified ISO 9001:2015
- DIRECTIVE 2014/68/EU : Products excluded from directive (Article 1, § 2b)
- Threaded cylindrical female BSP ends according to ISO 228-1

INSTALLATION POSITIONS :

Vertical position (ascendant fluid)

